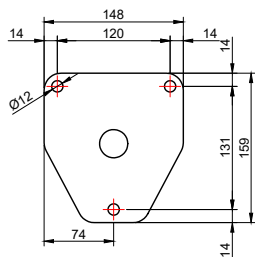


## Tread Fixed

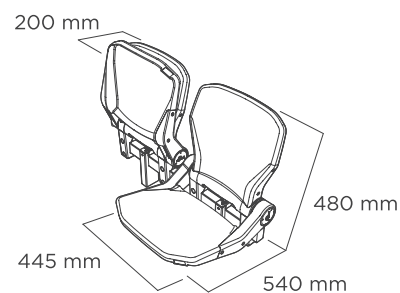


## Riser Fixed



## AVATAR BASIC SEAT SIZES AVAILABLE

445mm Seat



60mm x 40mm steel beam.

2 Tread or Riser fittings per 4 seats.

Black powder coat paint finish as standard.

Polypropylene injection moulded.  
Chassis of seat moulded from FRP class reinforced plastic - black as standard.

UV protected.

Fire retardancy tested.

High resistance against severe public use in accordance to EN-13200 standard Part 4: Seating for spectators.

UV resistance: seat and backrest are made of copolymer polypropylene with protection against UV light according to European regulations. Seat and backrest close at the same height minimising the hours of solar exposure of the seat.

Avatar seat optimises the space between rows.  
When it is folded it occupies 200mm of depth.

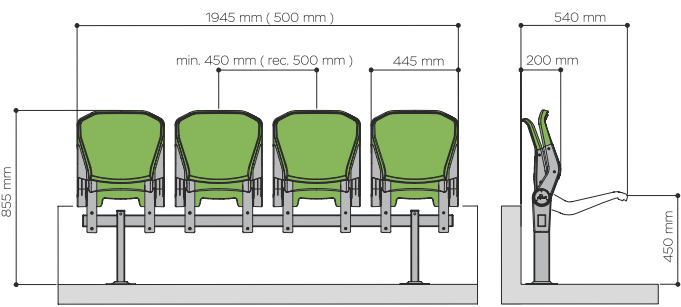
Seat with integrated and patented return motion.

Zinc plated sleeve anchors and bolts.

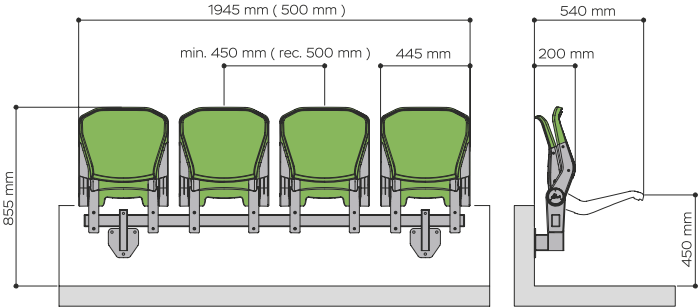
Fittings supplied as standard on full seat orders only.

# Avatar Basic Seat

## Dimensions Floor Mounted Example



## Dimensions Riser Mounted Example



STANDARD COLOURS			
Red 34080	Blue 1196	Black 35001	Grey 1219
			

For orders over 500 units, non-standard colours will be subject to an extra charge for special manufacturing. Enquire for details.

INSTALLATION SYSTEM	
Quick assembly: the whole seat is made up of plastic seat plus a metal rail. The seat is supplied pre-installed, ready to anchor to the metal rail in the bleacher.	Flexibility: the metallic rail adapts to any geometry or need of the concrete bleacher. It makes it easy to adapt the distance between seats to change distribution or seating capacity.

TESTING STANDARDS	
Manufactured in compliance with the EN 1021 Part 1 & 2 regulations (standard fire resistance) or in fireproof M2.	Compliant with UEFA/FIFA recommendations.
Officially approved by FIBA (International Basketball Federation).	Tested according to international standards: EN 12727:01 for spectator seating on resistance and durability.
Operating under the ISO 9001 and ISO 14001 quality assurance system for manufacturing stadium seats.	Resistance according to European Standard EN ISO 4892-2 and average colour variation dE<5 (CIELAB colour space)*.

\*Exposure in test: 2300 hours according to UNE-EN 13200-4.

OPTIONAL EXTRAS					
Cataphoresis	Black Powder Coated Steel	Plastic Caps for post fixing bolts on legs	Aluminium numbering	Screen Printed Logos	Embroidered Logos
Plastic Arms	Chassis available in Grey	Compact Seat 420mm	Avatar Premium With Upholstered Pads	Avatar Suite Fully Upholstered Seat	Cup Holder (Black)
Optional: Press table - individual or collective			Armrest fixed at the backrest		