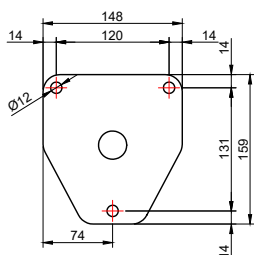


Avatar Suite

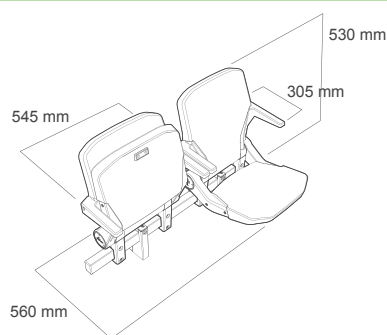
The Avatar Suite with arm rests are recommended for priority areas in first-class stadiums or to highlight VIP areas in sports venues.



Tread Fixed Avatar Suite Fully Upholstered with optional Arms and Galvanised Metal Work

Width: 445 mm
Width with armrests: 545 mm
Distance between axes:
• minimum 550 mm (2 armrests)
• minimum 505 mm (shared armrest)
Height of the backrest: 530 mm
Depth (opened): 560 mm
Depth (closed): 215 mm
Depth with armrests (closed): 305mm

AVATAR SUITE SIZE AVAILABLE



TECHNICAL CHARACTERISTICS

Seat and backrest are formed by an internal steel chassis covered with injected polyurethane foam with a minimum density of 50 kg / m³. The whole seat is fully upholstered with leatherette covers with a high resistance to atmospheric agents. The dimensions of the backrest are larger to improve comfort.

AESTHETICS AND COMFORT

Avatar Suite optimises the space between rows. When it is folded it occupies 215mm of depth and the whole chair with armrest occupies 305mm of row depth.

Avatar Suite has a quilted and upholstered finish.

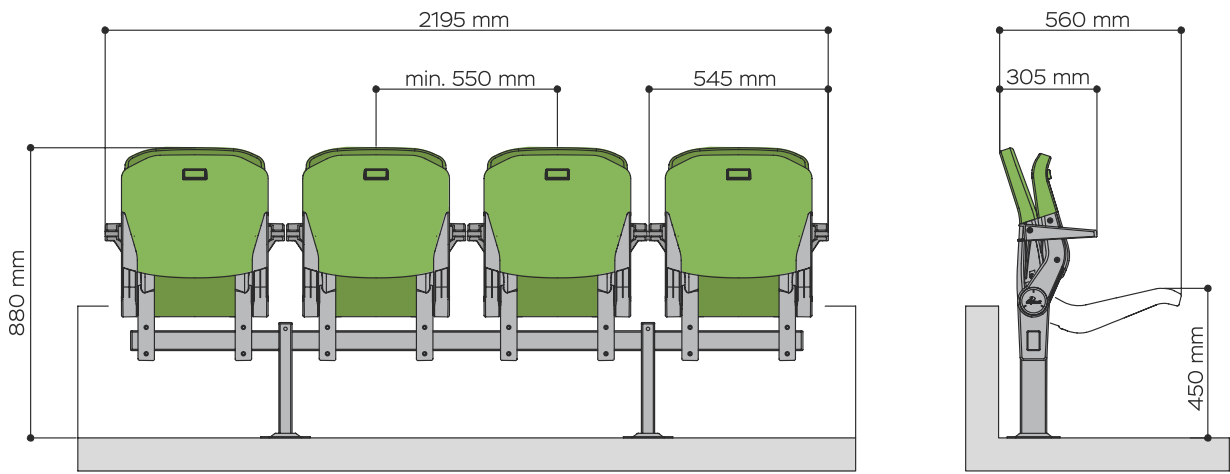
The design takes into account the recommended values of the average anthropometric percentile (50%) with a correct angle of inclination of the backrest with respect to the seat. This has the appropriate depth with the front edge smoothed to improve spectator comfort. In addition, the seat allows for free movement and change position thanks to its wide body support space.

FIXING SYSTEM

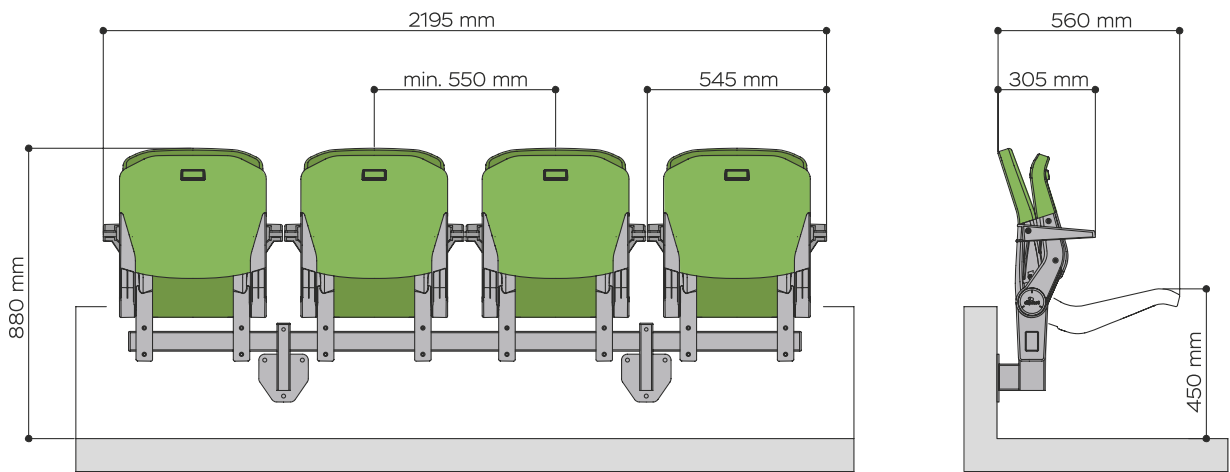
The seat is fixed to the monorail which is made of high quality steel, rectangular 60x40x2mm. This system allows for a customised and flexible arrangement with options for riser and floor mounted installation.

Avatar Suite

Dimensions Floor Mounted Example



Dimensions Riser Mounted Example



| TESTING STANDARDS | |
|---|---|
| Manufactured in compliance with the EN 1021 Part 1 & 2 regulations (standard fire resistance) or in fireproof M2. | Compliant with UEFA/FIFA recommendations. |
| Officially approved by FIBA (International Basketball Federation). | Tested according to international standards: EN 12727:01 for spectator seating on resistance and durability. |
| Operating under the ISO 9001 and ISO 14001 quality assurance system for manufacturing stadium seats. | Resistance according to European Standard EN ISO 4892-2 and average colour variation dE<5 (CIELAB colour space)*. |

*Exposure in test: 2300 hours according to UNE-EN 13200-4.

| OPTIONAL EXTRAS | | | | |
|--|-----------------------------------|--|------------|-------------------|
| Armrests integrated into the backrest. These are injected with high-resistance polyamide with fiberglass to improve spectator comfort without creating a physical barrier once the seat is folded. | Metal armrests fixed to the rail. | Coasters can be fixed on the rail and are independent of the seat. | Numbering. | Embroidered logo. |

Avatar Suite

CERTIFICATE OF WARRANTY (ARENA STADIA SEATING)

DAPLAST, S.L. CERTIFIES the warranty of its product for the period of time indicated below. The warranty begins on the date of acceptance of the products according to the general conditions of sale <https://daplast.com/english/general-sales-conditions/>

| WARRANTY COVERAGE AND WARRANTY PERIODS | | |
|--|--|---------|
| Mechanical resistance | Mechanical properties of the seat, cracking and crazing of polymers. | 3 years |
| | Mechanical properties of brackets and fixtures. | |
| | Fixture to grandstand. | |
| Corrosion and moisture resistance | Hot-dip galvanized steel elements. | |
| | Powder coated steel elements. | |
| | Concrete fixing anchors. | |
| | Seat numbering system. | |
| | Wood components. | |
| UV radiation resistance of surface finishes. | Color fading of polymers (*) | |
| | Color fading of wood components (*) | |
| | Color fading of paint coating on steel (*) | |
| | Color fading of fabrics (*) | |
| | Fading of numbering system color (*) | |

(*) Average dE < 5 according to CIELab parameters. Only for colors with high UV resistance.